

SNOWFLAKE'S AI DATA CLOUD

A global network connecting you to critical data, applications and models to unlock AI.

At Snowflake, we believe a solid data foundation across multiple data types and workloads is a prerequisite to unlocking AI innovation and success. From there, you can scale with applications through a streamlined development, deployment and productization platform. The AI Data Cloud is what makes this not only possible but easy.

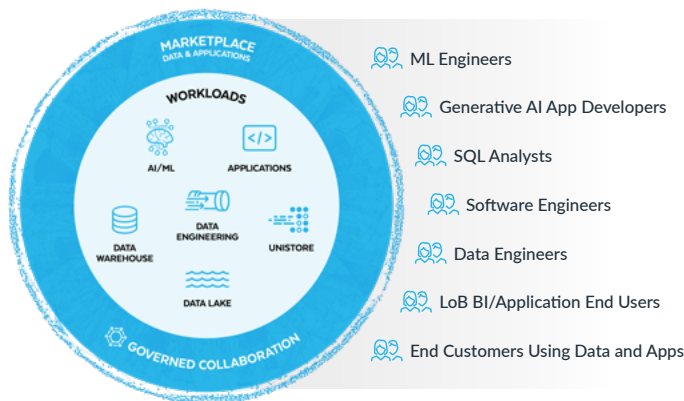
WHAT IS THE SNOWFLAKE AI DATA CLOUD?

The AI Data Cloud is a global network that connects you to the data, applications and models that are most critical for your business. The AI Data Cloud is made up of two key elements:

- 1. The Snowflake platform** provides a unique architecture that supports multiple data types, workloads, languages and runtimes on a common data foundation to connect your business globally at practically any scale, through a single platform.
- 2. The content** includes models and thousands of data sets and applications that your business can rely on. Relevant and valuable content is ready to be mobilized to drive better-informed decisions, products and services, and business outcomes.

The many benefits of the AI Data Cloud fall into three main areas:

- **Unified:** Eliminate silos across hundreds of different data environments for different data types and teams. This is because the AI Data Cloud doesn't consist of a bunch of separate tools that you have to assemble - it consists of one unified platform for your data and AI strategies. It enables your entire company – from analysts to data scientists, to software engineers, to business users – to get on-demand resources and work on a common data foundation.
- **Fully Managed:** Automate costly and complex operations to reduce overhead and improve efficiency. The AI Data Cloud runs on fully-managed infrastructure with near-zero maintenance, no upgrades or downtime and built-in governance and security.
- **Connected:** Discover, share and distribute content within your organization, across your business ecosystem, or with third-party consumers and providers. Each Snowflake customer is immediately part of the AI Data Cloud so you can easily monetize your content to nearly 10,000 other companies through the Snowflake Marketplace.



THE SNOWFLAKE PLATFORM

To meet the needs of your business, a modern platform needs to be fast for any workload, needs to “just work” and needs to connect your teams to what matters. Platforms should improve access and collaboration across your business, seamlessly and securely. The AI Data Cloud has a unique architecture that delivers what your organization needs without trade-offs.

SNOWFLAKE CUSTOMERS SEE SIGNIFICANT BENEFITS



ACCELERATE TIME TO INSIGHT

96% of customers surveyed agree Snowflake has high uptime/availability.



RELIABLE PARTNER

89% agree Snowflake is easy to do business with.



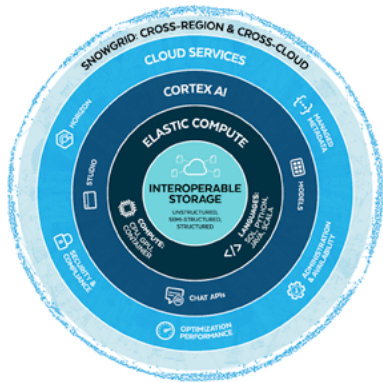
CUSTOMER FIRST

85% agree Snowflake prioritizes its customers' needs.



TRUSTED PROVIDER

87% agree Snowflake follows through on its commitments.



Snowflake's platform has five distinct layers:

- 1. Interoperable storage:** Access and process structured, semi-structured and unstructured data seamlessly, without silos or delays. Unique automations and optimizations include encryption by default, built-in storage compression and fast access to data even at petabyte scale. Snowflake's flexibility enables businesses to deploy a wide range of architectural patterns including a data lake, data warehouse, lakehouse, or data mesh. Compatibility with on-premises data and open table formats, such as Apache Iceberg, further extends the value of the AI Data Cloud to your data estate.
- 2. Elastic compute:** Scalable and efficient performance for various workloads allows you to separate compute from storage, scale up or down instantly, and pay only for the resources you use. The engine supports multiple languages, including Python, SQL, Java and Scala, and provides workload isolation and high concurrency. It is designed for speed, offering leading performance and concurrency without resource contention. You can securely work with your preferred libraries and development interfaces, making it flexible and fully programmable.

- 3. Cortex AI:** Leverage fully managed models, such as Snowflake Arctic and Mistral, for tasks like text processing, sentiment analysis and custom summaries with Cortex AI, Snowflake's generative AI (gen AI) capabilities. Access multiple code interfaces, including those for SQL and Python, and the Snowflake Studio for no-code development. Cortex AI has also led to the creation of a suite of gen AI products including Snowflake Copilot – an AI-powered assistant that helps you complete tasks within Snowflake – and Document AI – a family of services that use machine learning to understand and extract data from various types of documents.
- 4. Cloud services:** Enjoy near-zero maintenance because there are no upgrades or downtime to worry about. Built-in governance through the Snowflake Horizon Catalog provides compliance, security, privacy, discovery and collaboration capabilities without additional configurations or protocols. You can also take advantage of transparent performance enhancements that are often automatically applied through releases. With the consumption-based pricing model, you pay only for what you use and Snowflake has a built-in cost management interface, raw-usage data, and tagging features for better visibility and spend control.
- 5. Snowgrid:** A technology layer that interconnects your businesses' ecosystems across regions and clouds. Snowgrid enables cross-cloud collaboration so that you can quickly discover, access and share content across clouds and regions, without ETL. It also powers cross-cloud governance so that flexible policies, tags, and lineage follow the data for consistent enforcement across users, workloads, clouds and regions. Furthermore, Snowgrid allows for cross-cloud business continuity so you can enjoy unmatched resiliency to eliminate disruptions, comply with changing regulations, or migrate between clouds.

THE CONTENT

Snowflake Marketplace: Discover over 2,500 live, ready-to-use data, apps and AI products from more than 580 providers

Snowflake customers: Thousands of companies share data with suppliers, partners, or other business units

Powered by Snowflake applications: Businesses rely on hundreds of applications that are run in the AI Data Cloud

[Learn More](#)

ABOUT SNOWFLAKE

Snowflake makes enterprise AI easy, efficient and trusted. Thousands of companies around the globe, including hundreds of the world's largest, use Snowflake's AI Data Cloud to share data, build applications, and power their business with AI. The era of enterprise AI is here.

Learn more at snowflake.com (NYSE: SNOW)